

CINQ NOUVEAUX CROQUIS

Soprano or Tenor
Saxophone in B \flat

for soprano or tenor saxophone and piano

Michel LYSIGHT

POINTE D'ARGENT

Lento $\text{♩} = \pm 63$
Pno.

A *p* *mf*

B *f* *ff* *p subito* *cresc.*

C *ff*

D *p* *pp*

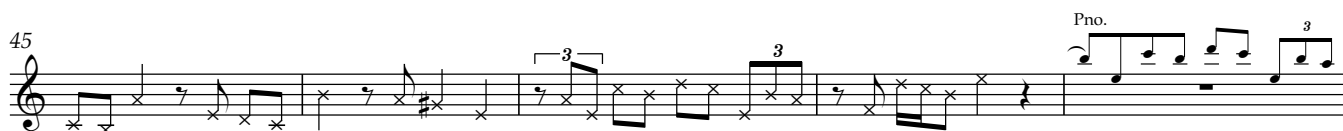
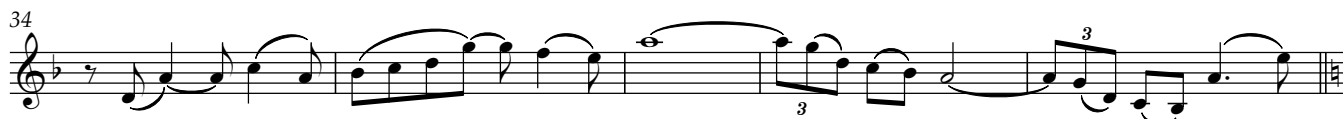
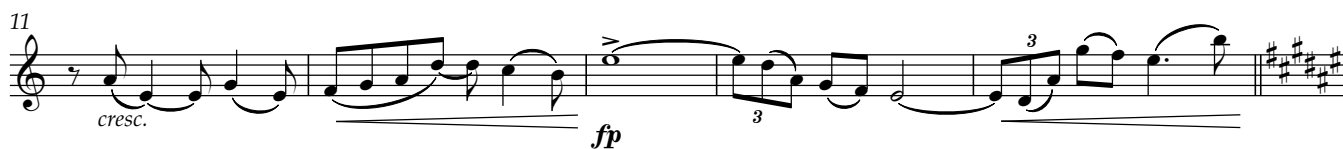
E *mf* *pp* *p* *mf*

F *f* *rit.* *p*

SFUMATO

Andante $\text{♩} = \pm 72$

Pno.



ENCRE DE CHINE

Allegretto ♩ = ± 92

2

A

mp

f

p

f

mf

pp *mp*

mf

mf

f

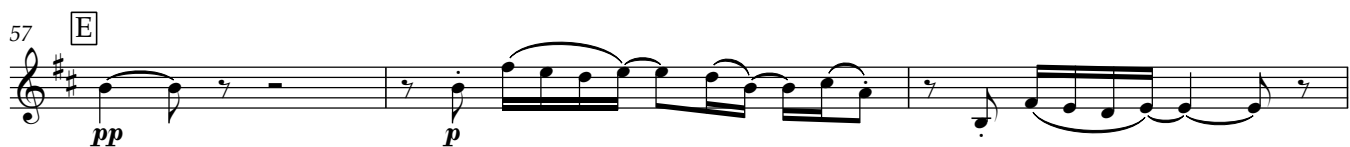
p

45 D

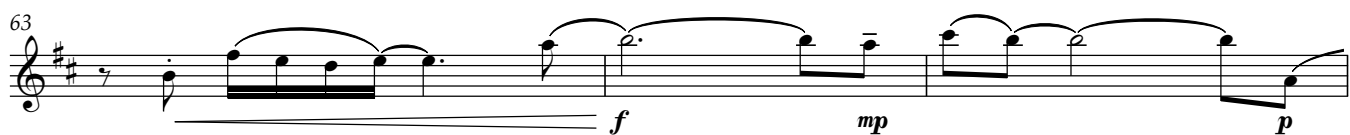

48


51


54


57 E


60


63


66


69


72


CAMAÏEU

Lento ♩ = ± 60

4 Pno. **A**

8

11 **B** Pno. *mf* *pp* *mp*

17 **C** *f*

20

23 **D** *ff*

26 *fp*

29 **E** *ff* *mf* *p* *pp* Pno.

33 *p*

36

39 **F** Pno.

43 rit.

OCRE

Andante $\text{♩} = \pm 80$
2 Pno. A

7

12 B

17

22 C

27

32 D

37

41 E rit. *ad lib.*
8va

a tempo
ad lib.

46 (8) *cresc.*

p *mp* *f* *pp* *mf* *f*