

MICHEL LYSIGHT

# L'ŒUVRE AU ROUGE

FOR CELLO QUARTET

---

VIOLONCELLO III

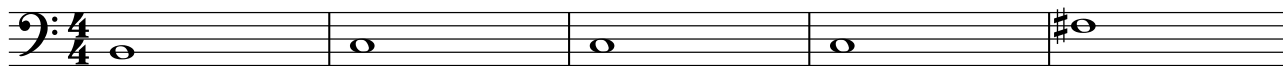
---

# L'ŒUVRE AU ROUGE

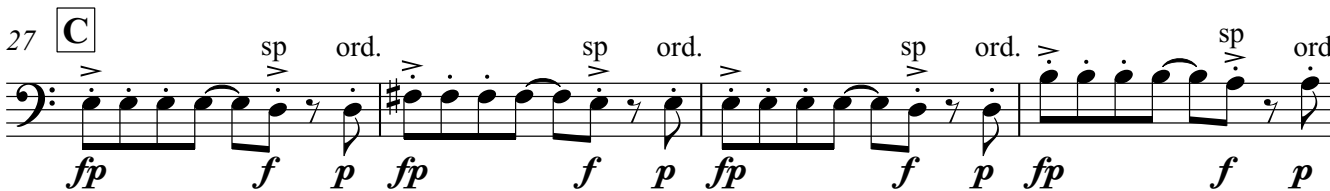
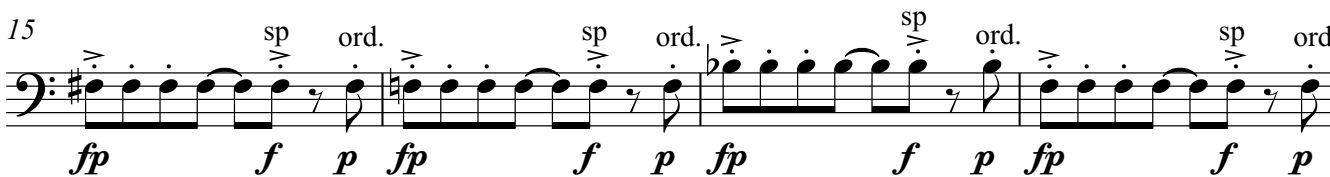
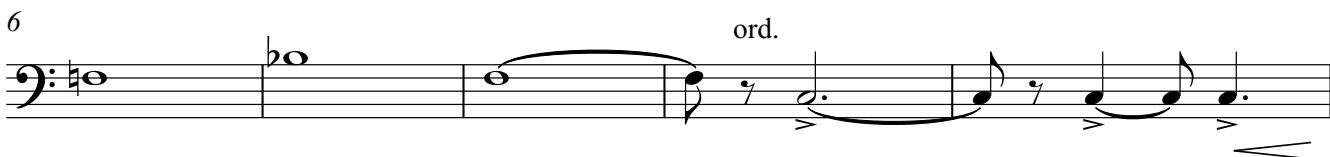
for cello quartet

Michel LYSIGHT

Lento  $\text{♩} = \pm 66$   
sul tasto



*p*



Violoncello III

2

35 **D**

Staff 35-39: Bass clef, 4/4 time signature. Measure 35 starts with a key signature of one sharp (F#). The music consists of eighth notes with slurs and accents.

40

Staff 40-44: Bass clef, 4/4 time signature. Measure 40 continues the eighth-note pattern. Measure 44 ends with a half note and a fermata.

45

Staff 45-49: Bass clef, 4/4 time signature. Measure 45 continues the eighth-note pattern. Measure 49 ends with a half note and a fermata.

**E** Andantino  $\text{♩} = \pm 76$

Staff 51-55: Bass clef, 4/4 time signature. Measure 51 starts with a fermata and a *ff* dynamic. Measure 52 has a *pizz.* marking. Measure 55 ends with a fermata.

56

Staff 56-59: Bass clef, 4/4 time signature. Measure 56 continues the eighth-note pattern. Measure 59 ends with a fermata and an *arco* marking.

60 **F**

Staff 60-64: Bass clef, 4/4 time signature. Measure 60 starts with a *p* dynamic. The music features eighth notes with slurs and accents.

65

Staff 65-68: Bass clef, 4/4 time signature. Measure 65 continues the eighth-note pattern. Measure 68 ends with a fermata and an *f* dynamic.

69 **G**

Staff 69-70: Bass clef, 4/4 time signature. Measure 69 features a sixteenth-note pattern with slurs and accents.

71

Staff 71-72: Bass clef, 4/4 time signature. Measure 71 continues the sixteenth-note pattern with slurs and accents.

Violoncello III

73



75



77 **H**



79



81



83



85 **I**



87



89



Violoncello III

4

91

Measures 91-92: Bass clef, 4/4 time signature. The music consists of eighth-note patterns with accents and slurs.

93

Measures 93-94: Bass clef, 4/4 time signature. The music consists of eighth-note patterns with accents and slurs.

95

Measures 95-96: Bass clef, 4/4 time signature. The music consists of eighth-note patterns with accents and slurs. Measure 96 has a 3/4 time signature change.

97

Measures 97-98: Bass clef, 4/4 time signature. The music consists of eighth-note patterns with accents and slurs.

99

Measures 99-100: Bass clef, 4/4 time signature. The music consists of eighth-note patterns with accents and slurs. Measure 100 has a *pp* dynamic marking.

101 **J**

Measures 101-107: Bass clef, 4/4 time signature. The music consists of chords with *fp* dynamic markings.

108

Measures 108-113: Bass clef, 4/4 time signature. The music consists of chords with *fp* and *f* dynamic markings. Measure 113 has a *fp* dynamic marking and the instruction "sul ponticello".

114 **K** Lento  $\text{♩} = \pm 63$   
ord.

Measures 114-116: Bass clef, 3/2 time signature. The music consists of eighth-note patterns with *f* and *mp* dynamic markings.

117

Measures 117-118: Bass clef, 3/2 time signature. The music consists of eighth-note patterns.

120



123



124



125



127



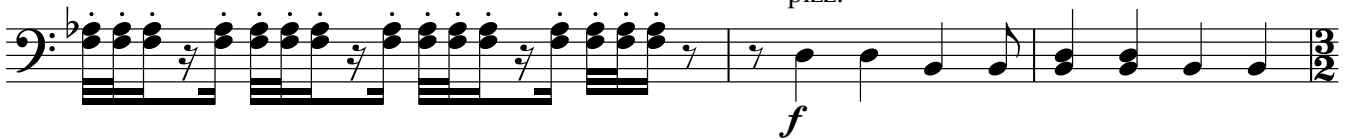
129



131



133



136



Violoncello III

6

141 **L** arco

145

149

153 **M**

156

160 **N** Andantino  $\text{♩} = \pm 76$

162

164

166

Violoncello III

168 **O**  
  
*ff*

170

172

174

176

178 **P**

184  
  
*p subito*

189

194 **Q** Allegro  $\text{♩} = \pm 144$   
  
*ff*



Violoncello III

8

198

202 **R**

207

211

214

218 **S** Lento  $\text{♩} = \pm 66$

227