

MICHEL LYSIGHT

THE OLD MASTERS OF SPEYSIDE

FOR STRING ORCHESTRA

DOUBLE BASS

THE OLD MASTERS OF SPEYSIDE

for string orchestra

Michel LYSIGHT

Lento $\text{♩} = \pm 60$

A



7



13



19

B



25



31

C



37



43

D



49



55



61



67



73



79



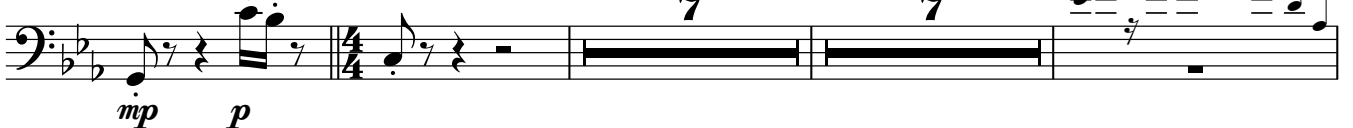
85



91



96



Double Bass

4

113 **I** pizz.

Musical notation for measure 113, starting with a bass clef and a key signature of two flats. The measure contains a series of quarter notes, each with a downward bowing hairpin. The dynamic marking *ff* is placed below the first note.

120 arco **J**

Musical notation for measure 120, starting with a bass clef and a key signature of two flats. The measure contains a series of eighth notes with upward bowing hairpins. The dynamic marking *ff* is placed below the first note.

125

Musical notation for measure 125, starting with a bass clef and a key signature of two flats. The measure contains a series of eighth notes with upward bowing hairpins. The dynamic marking *ff* is placed below the first note.

129

K

Musical notation for measure 129, starting with a bass clef and a key signature of two flats. The measure contains a series of quarter notes with upward bowing hairpins. The dynamic markings *fp*, *mp*, *mf*, and *fp* are placed below the notes.

137

L

Musical notation for measure 137, starting with a bass clef and a key signature of two flats. The measure contains a series of quarter notes with upward bowing hairpins. The dynamic marking *ff* is placed below the first note.

143

Musical notation for measure 143, starting with a bass clef and a key signature of two flats. The measure contains a series of quarter notes with upward bowing hairpins. The dynamic markings *p* and *ff* are placed below the notes.

149 **M** Più mosso $\text{♩} = \pm 120$

solo Vln.

Musical notation for measure 149, starting with a bass clef and a key signature of two flats. The measure contains a series of quarter notes with upward bowing hairpins. The dynamic marking *ff* is placed below the first note.

152

Musical notation for measure 152, starting with a treble clef and a key signature of two flats. The measure contains a series of quarter notes with upward bowing hairpins. The dynamic marking *mp* is placed below the notes.

156

Musical notation for measure 156, starting with a bass clef and a key signature of two flats. The measure contains a series of quarter notes with upward bowing hairpins. The dynamic marking *mf* is placed below the first note.

159

Musical staff for measure 159, bass clef, 3/4 time signature. The staff contains a sequence of eighth and quarter notes with rests.

161 **N** Lento ♩ = ± 60

Musical staff for measure 161, bass clef, 3/4 time signature. The staff contains a sequence of eighth notes with accents. Dynamics include *ff* and *p*. Performance markings include **Liberamente**, *solo Vln.*, and *pizz.*

168

Musical staff for measure 168, bass clef, 3/4 time signature. The staff contains a sequence of quarter notes with rests.

176

Musical staff for measure 176, bass clef, 3/4 time signature. The staff contains a sequence of quarter notes with rests. A boxed letter **O** is present at the end of the staff.

184

Musical staff for measure 184, bass clef, 3/4 time signature. The staff contains a sequence of quarter notes with rests. Dynamics include *p subito*, *cresc.*, and *f*.

192

Musical staff for measure 192, bass clef, 3/4 time signature. The staff contains a sequence of quarter notes with rests. Dynamics include *mf* and a boxed letter **P**.

200

Musical staff for measure 200, bass clef, 3/4 time signature. The staff contains a sequence of quarter notes with rests.

208

Musical staff for measure 208, bass clef, 3/4 time signature. The staff contains a sequence of quarter notes with rests. A boxed letter **Q** is present at the beginning of the staff.

215

Musical staff for measure 215, bass clef, 3/4 time signature. The staff contains a sequence of quarter notes with rests. Dynamics include *ff*. Performance markings include *8va* and *3*.