

# AN AWAKENING

for two instruments and harp or piano or harpsichord

Soprano Saxophone in B $\flat$

Michel LYSIGHT

## I

Lento  $\text{♩} = \pm 69$

Instrument II

4

8 **A**

12 **B**

16 *mp* *cresc.* *mf*

20 *molto cresc.*

23 **C** *ff*

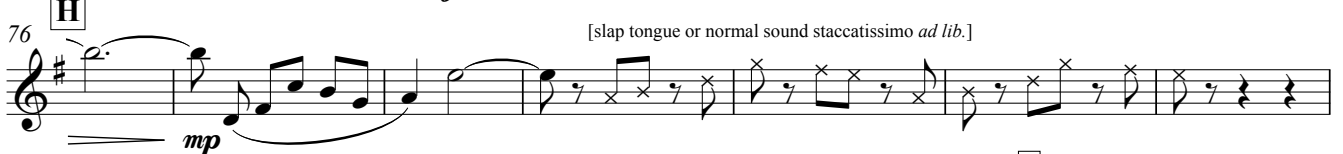
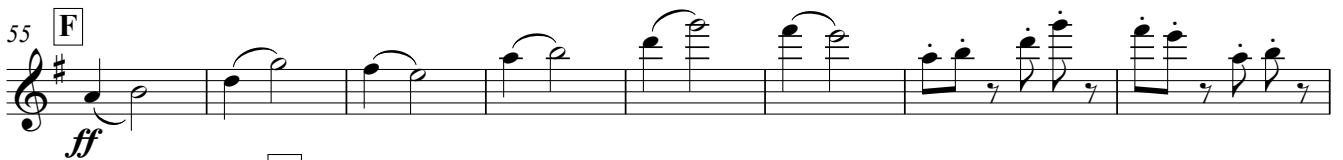
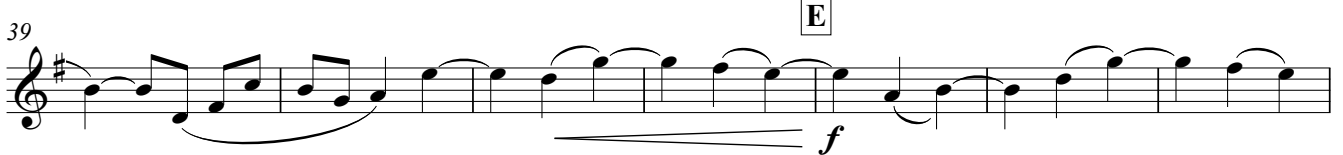
26

30 **D** *f*

33 *mf* *poco ritenuto*

36 *decresc.* *mp* *p*

## II

Moderato  $\text{♩} = \pm 92$  **A****D** Un poco più mosso

Soprano Saxophone in B $\flat$

# III

Andante  $\text{♩} = \pm 80$

A

8 12

21 B

2

Instrument II

21

27 C

27 *f*

31

35 D

35 *ff*

39

43

47 E

47 *mf*

51

Instrument II

56

*ritenuto*

F Più lento  $\text{♩} = \pm 52$

56 *p*

60

60 *pp*